

Special Education Advisory Committee (SEAC)

November 22, 2022



Specific Focus of Agenda

01

Welcome & Intros

Who is here?

02

Revocation of Services

What does it mean to revoke services?

03

Part B & Part C

What are Part B & Part C?

04

Your Thoughts

What's going well?
How could SEAC help you more? -
Breakout Rooms

05

Resources

What resources are you looking for?
What resources do you have to share?

06

Next Meeting

Join us on February 21, 2023. Meeting will be via Zoom.



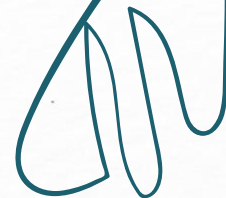
01

Welcome and Introductions



Welcome

- Please share your name
- What you hope to learn tonight



Introductions

Who is on your team?



Brittni Kuehl

SpEd Coordinator
Red Wing

Kayla Awolope

Assistant SpEd Director
Red Wing

Wendy Ahern

Assistant SpEd Director
Zumbrota-Mazeppa

Amy Buchal

Assistant SpEd Director
Kenyon-Wanamingo

Nicole Bolduan

SpEd Director
River Bluff Ed Center
Tower View

Cherie Johnson
Executive Director

Jill Rohan

SpEd Coordinator
Goodhue & Lake City

Jen Marquardt

SpEd Coordinator
River Bluff Ed Center

Carrie Hansen

SpEd Coordinator
5RiversOnline & Red Wing

Min MartinOakes

SpEd Coordinator
County-wide Birth to 3

Alisha Dalsin &

Sharon Noble

SpEd Coordinator
Cannon Falls



02

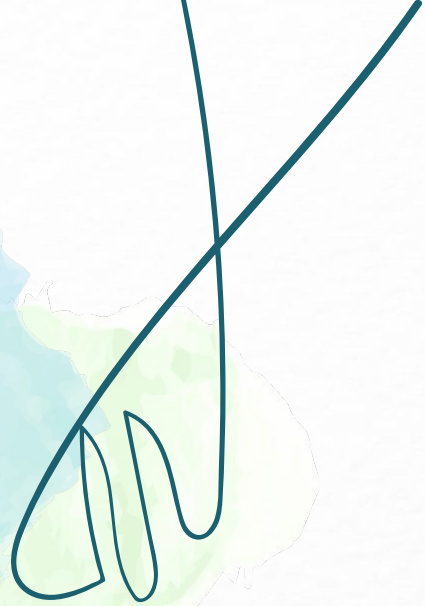
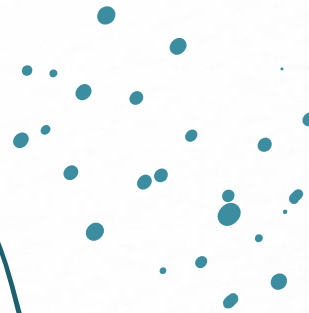
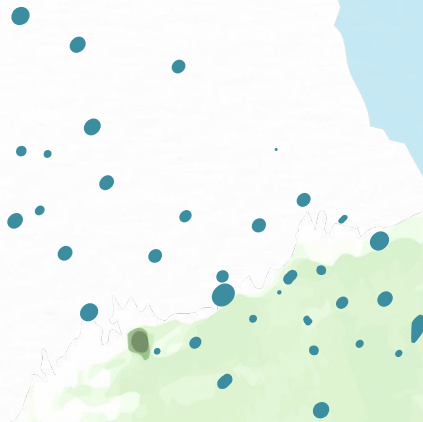
Revocation of Services

What is Revocation of Services

- Enacted in 2008 at the Federal Level
- A parent can now revoke consent for special education and related services at any time.
- Important points to know
 - Parents request to revoke services must be in writing.
 - Past education record remains unchanged.
 - District must provide a Prior Written Notice and receive consent.
 - District can ask parent for a reason but parent does not need to answer.
- When a parent revokes consent for special education services, does a student need to requalify later to receive special education services? Yes and no.
- Do both parents need to agree to revocation?
- Can a parent revoke some services and not others?
- What about classroom accommodations?
- Student is a general education student.
- The question of 504 Plan.

03

Part B and Part C



The “2” Parts of the IDEA



Part B
(ages 3-21)



Part C
(ages birth-2)

Find more
resources
HERE!

Key Differences Between Part C & Part B

Referral

Eligibility

Service Delivery

Part C

- Through Help Me Grow or the District
- 45 calendar day timeline

Part B

- Through Help Me Grow or the District
- 30 school day timeline

Part C

- Summary of eval within IFSP
- Present Levels of physical, cognitive, communication, social & adaptive development
- Informed clinical opinion
- Part C criteria for disability

Part B

- Summary of eval in a separate report
- Present levels of performance & educational need that derive from disability
- Part B criteria for disability

Part C

- Individual Family Service Plan (IFSP)
- Natural Environments
- Year-round service
- Built around routines & parent engagement

Part B

- Individual Education Program (IEP)
- Special Ed & Related Services
- Least Restrictive Environment (LRE)
- Extended School Year (ESY)
- Goals to address educational need
- Built around routines & educators as interventionists



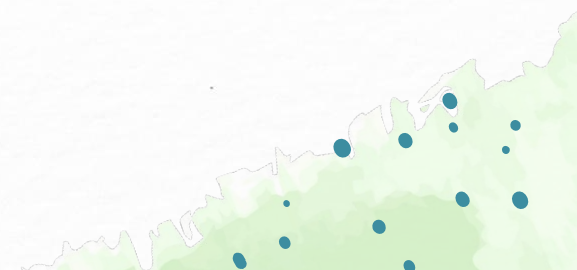
04

Your Thoughts



Share your thoughts!

Please take time to share what's going well in your districts and what are areas where you feel you could use more support from SEAC.

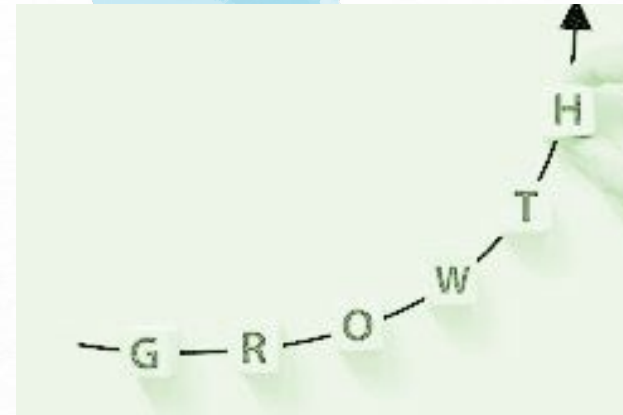


05

Community Resources



What community resources are you looking for? What resources do you have to share?





06

Next Meeting



Next Meeting

Join us on Feb. 21, 2023.
Meeting will be via Zoom.



Questions?