A stylized map of the United States is the background, rendered in various shades of blue and green with a watercolor-like texture. At the bottom center, there is a simple line drawing of a hand with fingers spread. The text is centered over the map.

# **Special Education Advisory Committee (SEAC)**

January 25, 2022

# Outcomes

1. Overview of SEAC
2. Our System of Supports
3. Strategies for Disregulated Students
4. Special Education Updates
5. Resources for Families
6. Next Meeting

# Welcome

- Your Name
- What you hope to learn tonight



# Introductions

Who is on the team?

TEAM  
SPED



**Brittni Kuehl**  
SpEd Coordinator  
Red Wing

**Marcia Walker**  
SpEd Director  
Red Wing

**Wendy Ahern**  
SpEd Director  
Zumbrota-Mazeppa

**Amy Buchal**  
Assistant SpEd Director  
Kenyon-Wanamingo

**Nicole Bolduan**  
SpEd Director  
River Bluff Ed Center  
Tower View

**Cherie Johnson**  
Executive Director

**Jill Rohan**  
SpEd Coordinator  
Goodhue & Lake City

**Jen Marquardt**  
SpEd Coordinator  
River Bluff Ed Center

**Carrie Hansen**  
SpEd Coordinator  
5RiversOnline & Red Wing

**Min MartinOakes**  
SpEd Coordinator  
County-wide Birth to 3

**Sharon Noble**  
SpEd Coordinator  
Cannon Falls

# Specific Focus of Agenda

**01**

## **Overview of SEAC**

What is SEAC?

**02**

## **Our System of Supports**

How we get the work done.

**03**

## **Strategies for Disregulation**

What is it and take away strategies you can use.

**04**

## **SpEd Updates**

What is happening in Goodhue County?

**05**

## **Resources**

Resources for you.

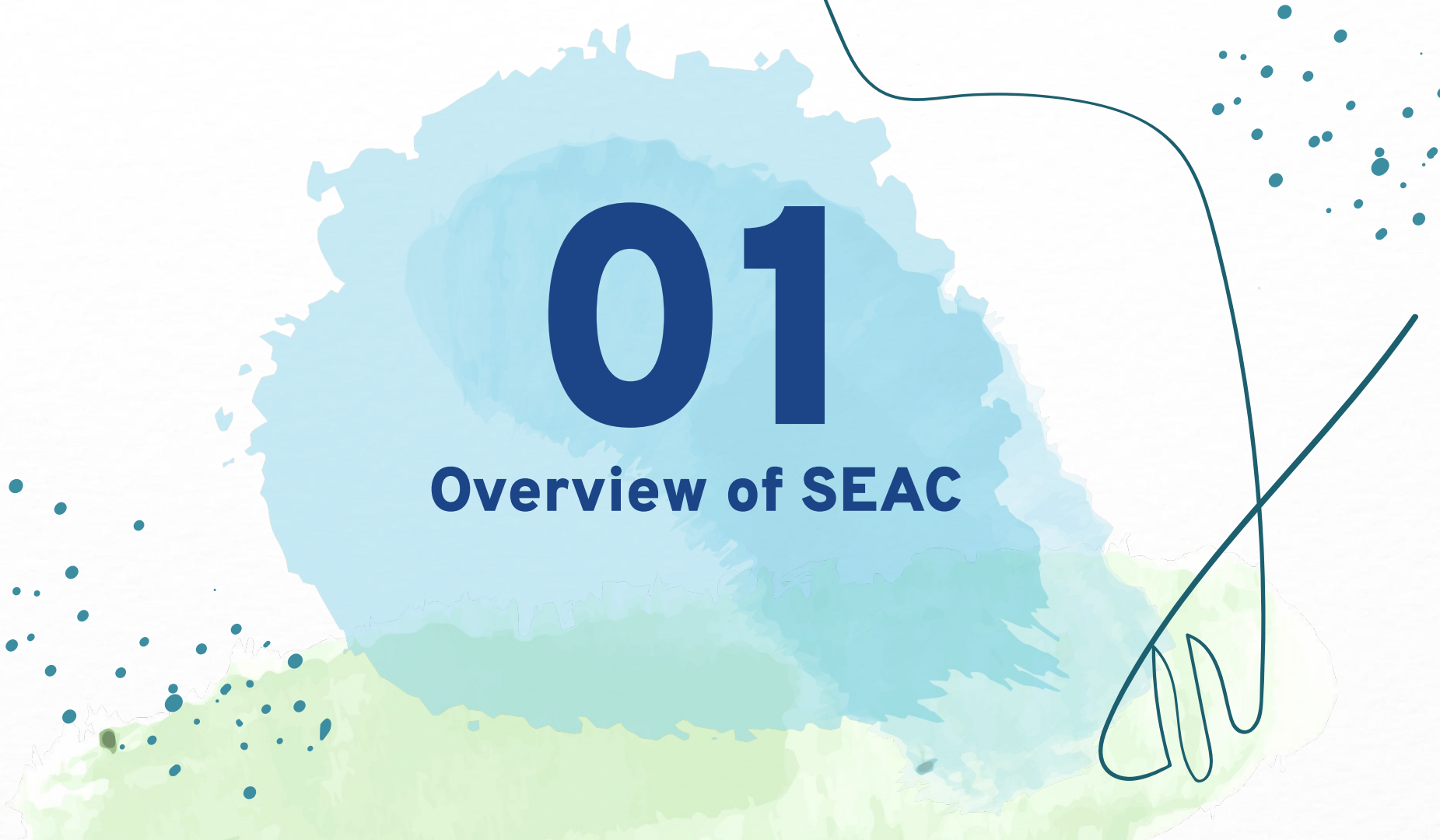
**06**

## **Next Meeting**

Join us on April 19th. Meeting will be via Zoom.

# 01

## Overview of SEAC



# SEAC Purpose

A SEAC **provides input** on special education issues to the district and **advises** the district on the development of programs and services to meet the special education needs of children and families.

To that end, SEAC will work to:

- **Promote collaboration** within the district and between the district and parent.
- **Advise and advocate** for students with disabilities and their parents.
- **Inform, support and advise** district staff, parents, students and community to *promote school success* for students with disabilities.
- **Collaborate** with parents and district staff to *promote best practice models* district wide for students in special education.



# Benefits of an Effective SEAC to Parent Members

- Knowledge gained about district programs & services may benefit their own or another family's child.
- Contributing to others may give added value & meaning to their own personal experience.
- Witnessing positive change as a result of their input & influence is rewarding & motivating.
- Learn new skills that may transfer to other areas of advocacy & leadership.
- Gain a big-picture perspective.
- Find opportunities to network & build relationships with other families with similar life experiences.
- Develop positive & helpful relationships with school staff.



“We all do better when we all do better.”

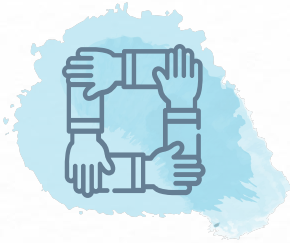
– **Paul Wellstone**



**02**

**Our System of Supports**

# What Sets Us Apart?



## Our Teaming

Close competency gaps.  
Measure what matters.



## Our Values

The core of our thoughts,  
words and actions.



## You

Your experience matters.

# Our Education District



## Education District

**Members:** 6 Districts

**Staff:** 154 staff

**Website:** [gced.k12.mn.us](http://gced.k12.mn.us)

### Strategic Plan:

#### Focus on MTSS

Build sustainable tiered supports.

#### Increased Communication

Increase effective networking.

#### Regular Annual Onboarding

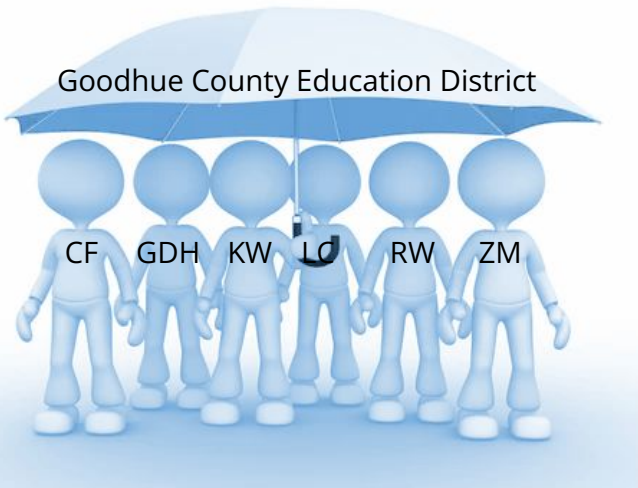
Assure all stakeholders know what they have.

### Connections:

- Superintendents
- Principals
- Special Ed Leadership
- Instructional Coaches
- General Ed Teachers
- Special Ed Teachers
- EL Teachers
- Career & Tech Teachers
- Paraprofessionals
- Therapists
- Business Office Staff
- GCH&HS
- Regional Supports
- State Supports

# GCED is the Umbrella Organization for:

- Alternative Education
  - ALCs (Pathways & Tower View)
  - Targeted Services & Credit Recovery
- English Language Learner Programs
- Online Learning - 5RiversOnline
- Perkins & Career/Tech
- Special Education Programming
- MTSS Development



# 03

## Strategies for Disregulation



# Strategies

Choices

Motivation

Praise





**04**

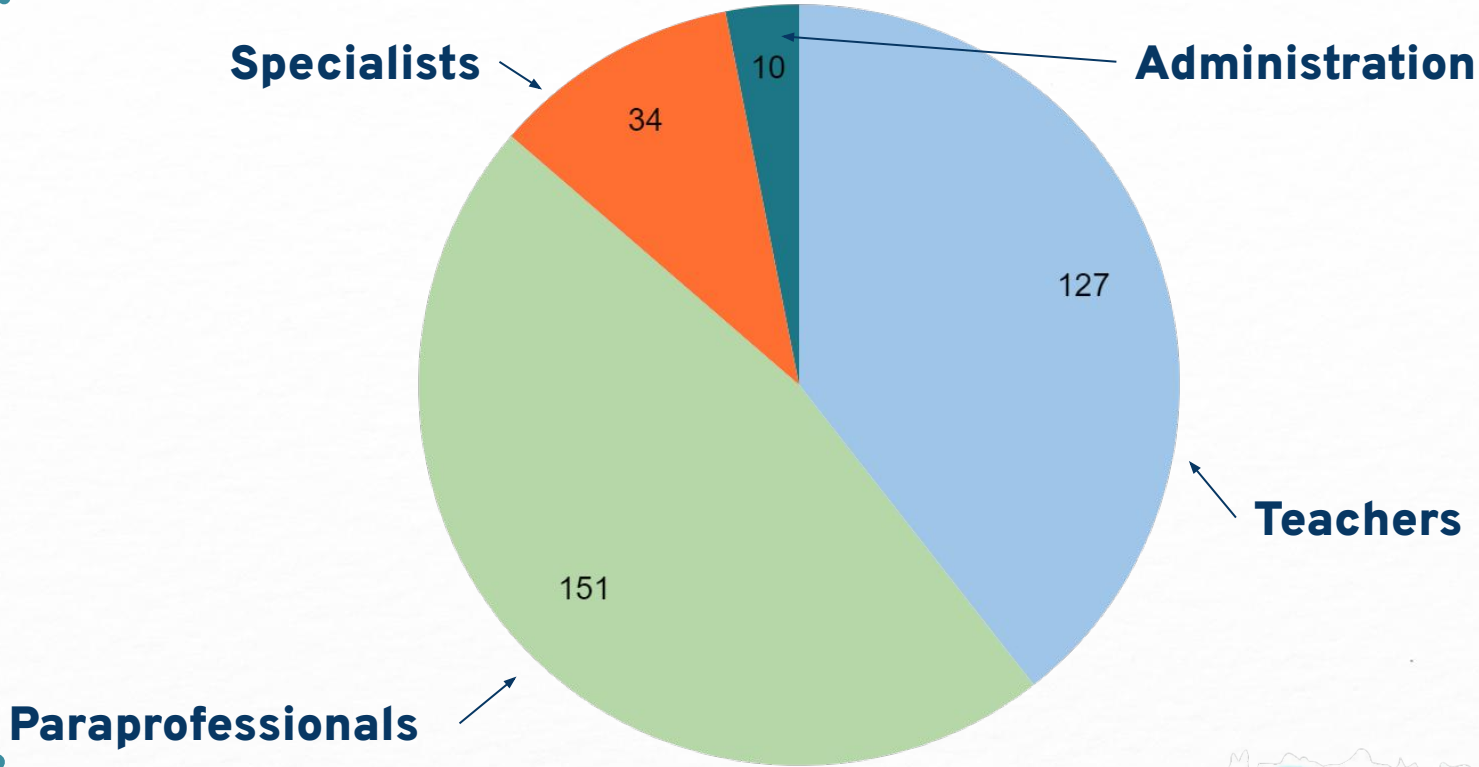
**SpEd Updates**



**1314**

Resident Students Receiving Special Education Services

# 2021-22 Special Education Staffing



# Other Items

- Over 1300 COVID-19 Recovery Meetings were held during 1st semester.

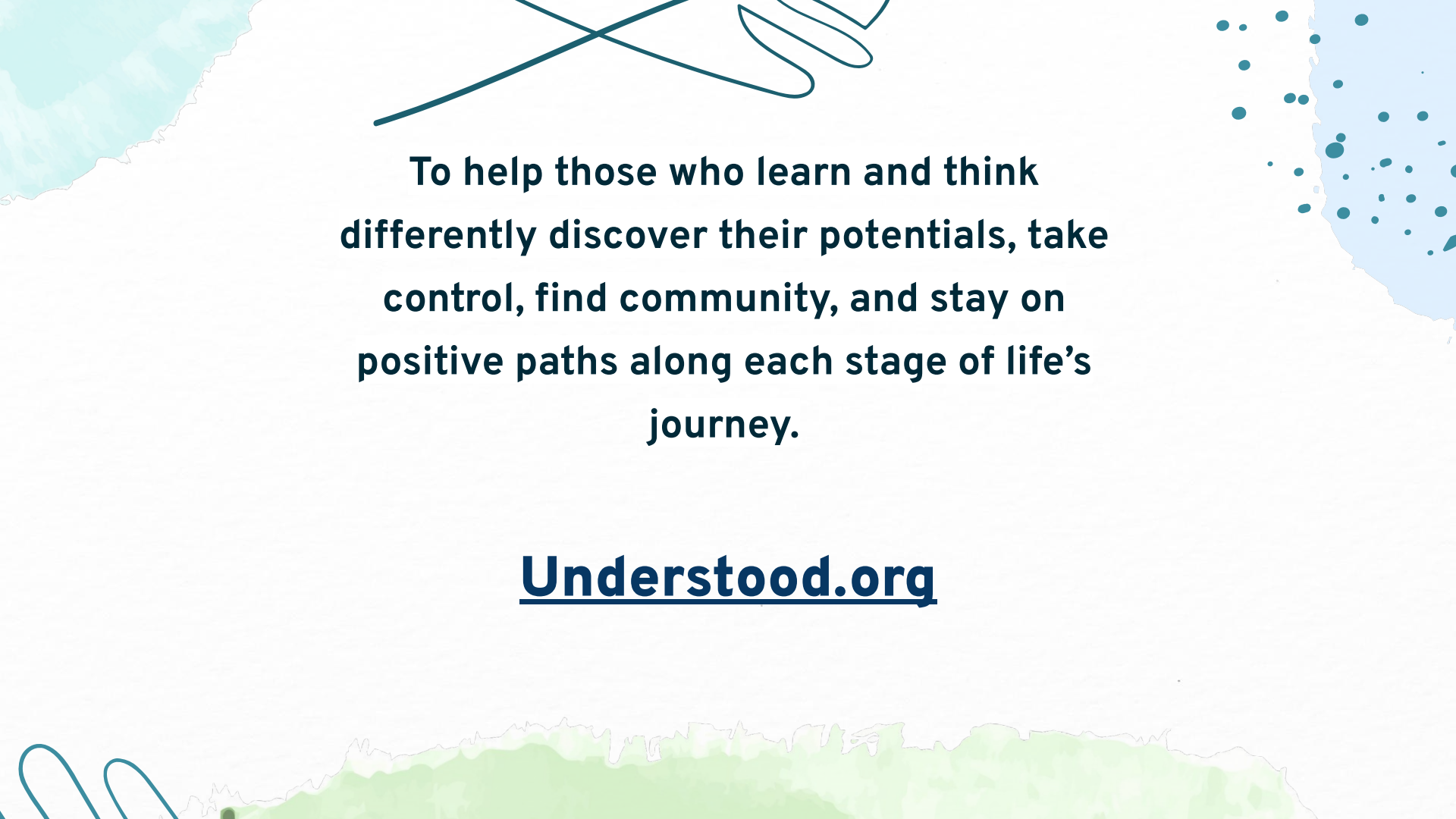


**05**

**Resources**



## Goodhue County Health & Human Services



To help those who learn and think differently discover their potentials, take control, find community, and stay on positive paths along each stage of life's journey.

**[Understood.org](https://www.understood.org)**



**Goodhue County Education District**





**06**

**Next Meeting**



## Next Meeting

Join us on April 19th.  
Meeting will be via Zoom.

A light blue watercolor splash is located in the bottom right corner of the image. It contains several small, dark blue dots of varying sizes scattered across the splash.



# Questions Feedback